

LLOYD DISTRICT **news** NEWS | EVENTS

AUGUST 4, 2009  
**Leftbank Project: Renovating Materials and History**

BY JOHN CHILSON

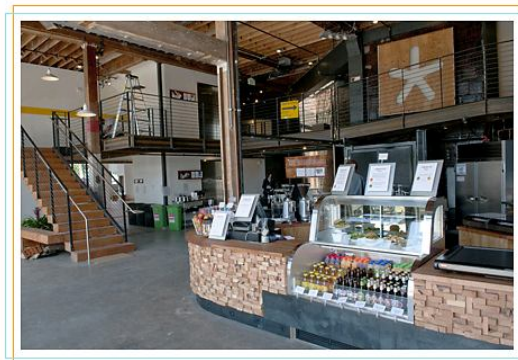
Chances are you've driven, biked or walked past the non-descript brick building on Broadway as you make the trip across the Broadway bridge from the eastside.

Originally known as the Hazelwood building, designed and built by architect A.E. Doyle in 1923, the building has a fascinating and notorious history. Once housing a restaurant, creamery, candy manufacturer, the building then morphed into a restaurant, beer hall, stood vacant, and most recently housed manufacturing companies. But the most infamous tenant was the Dude Ranch in the 1940s—ground zero for Portland's jazz scene in the 1940s that attracted local talent and some heavy national acts such as Lionel Hampton, Art Tatum, Nat "King" Cole and a young Thelonious Monk.



Many times, that's the end of the story. The scenario goes like this: said building has an interesting back story, it goes into disrepair, loses its appeal, gets torn down and a new structure gets built to replace it—sometimes retaining the flavor or even the name of the previous tenants. [I can see it now: "Dude Ranch Condominiums: Live the jazz life"]

But instead of being mowed down and forgotten, the building [along with a more recent one built later on the property] has been reborn as the Leftbank Project. The space has not only been saved it's also vying as a magnet for Portland's creative community, by attracting artists, retailers, a café, various organizations, and this being Portland, a beer brewer making some of the most unique beers in town.



*Leftbank Cafe offers coffee, soda, teas and yummy food delights crafted from local ingredients.*



*Original rounded windows were not only left intact, they were improved on, giving occupants full daylight indoors.*



*Spacious areas abound that are perfect for large community gatherings.*



*Original joists strengthened by newer beams.*

The developers also employed reuse and recycling techniques—including recycling seven tons of steel and reusing existing materials such as windows, milling water-damaged beams into stairways, and restoring covered materials. The building also uses a zoned HVAC system, energy-efficient LED lights, sustainable hardware, fixtures and other elements provided by local artisans, such as Eleek, Inc. and Stardust Glass.

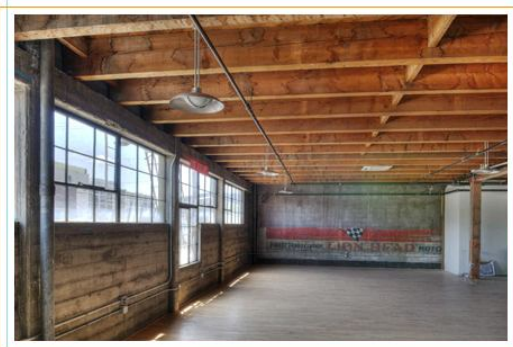


*Architectural details and oddities were left in place, rather than hidden.*



*A meeting of old and new—original brick walls and modern interiors*

There's even a ghost sign left over from the exterior of one of the complex's buildings—now in the interior space—that's been integrated into one of the larger rooms.



*Nice architectural touches include the saved "ghost sign" that once was outside before the renovation.*

Reuse, recycling, energy-efficiency and the cool design aside, the overall vibe to the space is that it's well on its way to becoming a hub for the Portland community. Its location is certainly a bonus. Near the Rose Quarter on one side of the river and the Pearl on the other, the Portland Streetcar will eventually zip almost directly in front of the space.

I'm not one to get overzealous about design: Exposed brick! Wood beams! Wall-to-wall windows! Sure, Leftbank has these features. But it has more: an enthusiastic and organically built community, a great vibe and a shot at becoming one of Portland's community hubs.



*Upright Brewing—which is now open for walk-in visitors—working on their latest beer that can be found around Portland.*

One of the more visible tenants, Upright Brewing, has opened its tasting room from noon-5 p.m. on Saturdays and Sundays. Beer fans can also find Upright's offerings at different pubs and summer events around town as well.

I invite you to visit the space. Stop by, enjoy some Stumptown coffee or a sandwich made from seasonally, local produce at the spacious but warm Leftbank Café; go upstairs and wander the hallways. You can feel the current tenant's creative spirits. And if you listen closely, you might—just might—hear the strains of a long-ago jazz jam being performed.

**Leftbank**  
240 N Broadway  
Portland, OR  
[leftbankproject.com](http://leftbankproject.com)

[Arrive by bike:](#) [opens as PDF]  
[Arrive by car:](#) [opens as PDF]

View our slideshow for more Leftbank images or visit our [Flickr gallery](#).